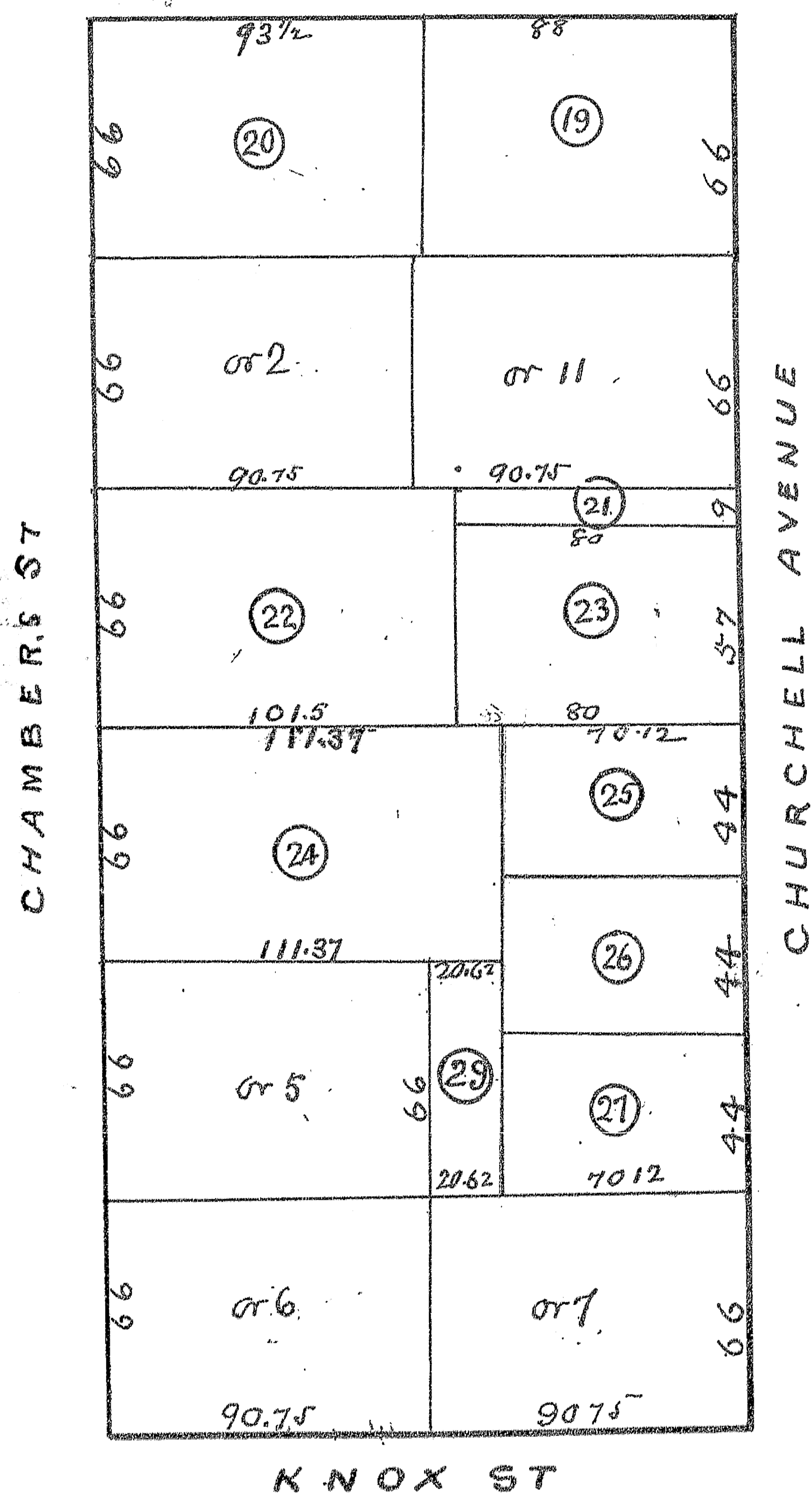


REVENUE PLAT 1904

— OF —

A SUBDIVISION OF LOTS 1, 3, 4, 10, 9 & 8
OF CHURCHELL & EGGERTSON'S SUBDIVISION OF LOTS 1 & 3
OF BLOCK 66 OF FIRST SOUTHERN ADDITION
TO GALESBURG KNOX CO ILL.



STATE OF ILLINOIS, }
Knox County. } ss.

I, C. S. RICHEY, County Surveyor of said Knox County, do hereby certify that the foregoing and annexed is a true and correct Plat and description of Lands advertised for Survey and Platting by the County Clerk, as taken from the records of Knox County, and by measurements and survey, as provided for in Sections 62 and 63, Chapter 120, Revised Statutes of Illinois, 1903.

Dated this 20th day of March, 1904.

C. S. RICHEY, County Surveyor.

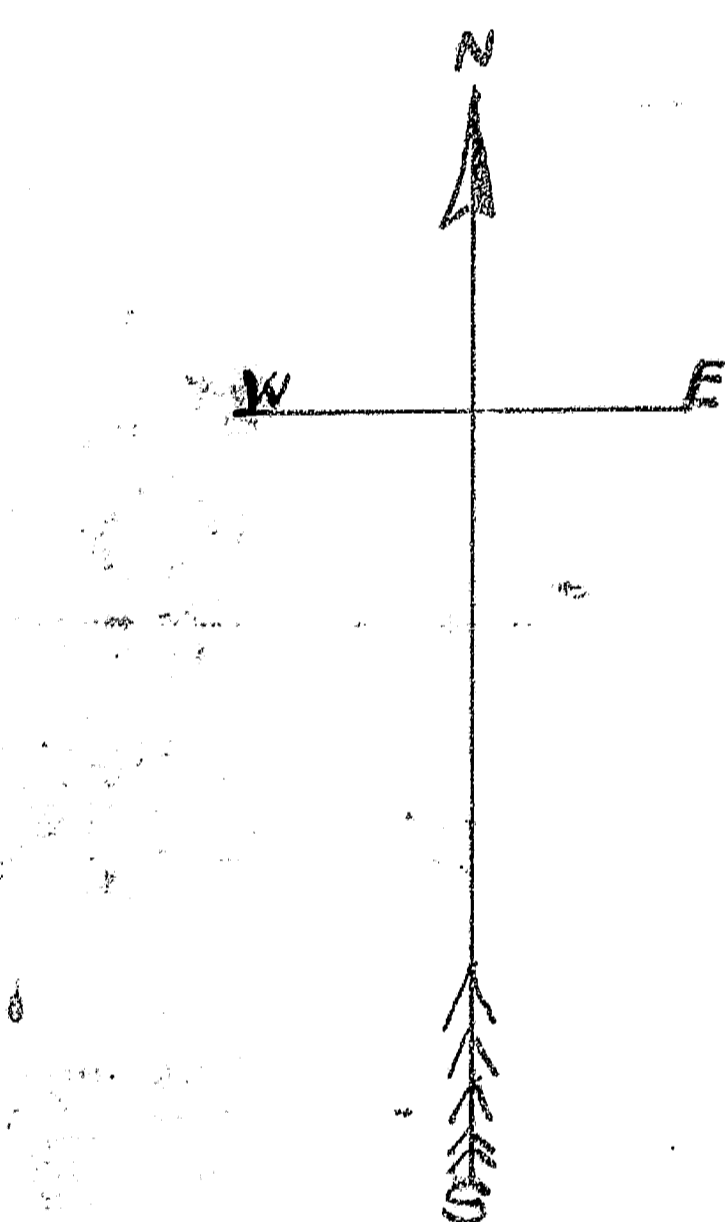
Approved by me, this 29th day of March, 1904.

FRANK L. ADAMS, County Clerk.

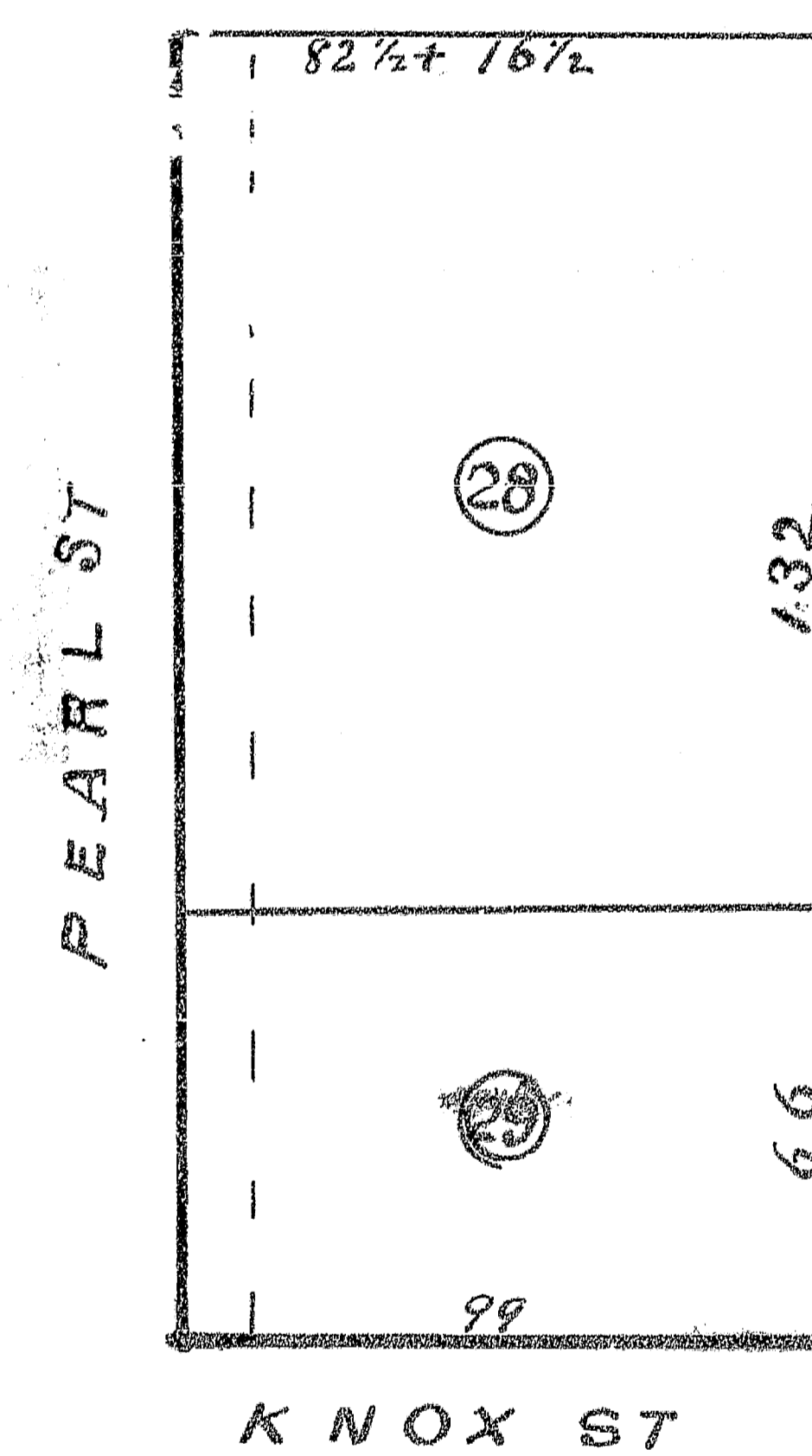
REVENUE PLAT 1904

— OF —

A SUBDIVISION OF SUBLOTS 7 & 8 OF A SUBDIVISION
OF ORIGINAL LOTS 5 & 6 OF BLOCK 66
OF FIRST SOUTHERN ADDITION TO GALESBURG
KNOX CO ILL.



Scale 50 FT = 1 inch



STATE OF ILLINOIS, }
Knox County. } ss.

I, C. S. RICHEY, County Surveyor of said Knox County, do hereby certify that the foregoing and annexed is a true and correct Plat and description of Lands advertised for Survey and Platting by the County Clerk, as taken from the records of Knox County, and by measurements and survey, as provided for in Sections 62 and 63, Chapter 120, Revised Statutes of Illinois, 1903.

Dated this 29th day of March, 1904.

C. S. RICHEY, County Surveyor.

Approved by me, this 29th day of March, 1904.

FRANK L. ADAMS, County Clerk.